

STATE OF CALIFORNIA - DEPARTMENT OF TRANSPORTATION
 NORTH REGION
 DIVISION OF ENGINEERING

FUNCTIONAL SUPERVISOR
 K. KEATON

CALCULATED/DESIGNED BY
 M. BRUTON

CHECKED BY
 F. PLAMAS

REVISED BY
 DATE REVISED

NOTES:

- FOR ACCURATE RIGHT OF WAY DATA, CONTACT RIGHT OF WAY ENGINEERING AT THE DISTRICT OFFICE.
- FOR REMOVE AC SURFACING, COLD PLANE AC PVT, SAWCUT AND RSP LOCATIONS, SEE CONSTRUCTION DETAILS.
- FOR DRY AND INTERSECTION CONNECTION DETAILS, MP TRAIL RELOCATIONS AND MP TRAIL WOOD FENCE DETAILS NOT SHOWN, SEE CONSTRUCTION DETAILS.

LEGEND

- DI APRON
- DE
- TCE/PTE/CEP
- TREE REMOVAL
- TREE STUMP REMOVAL
- ENVIRONMENTALLY SENSITIVE AREA

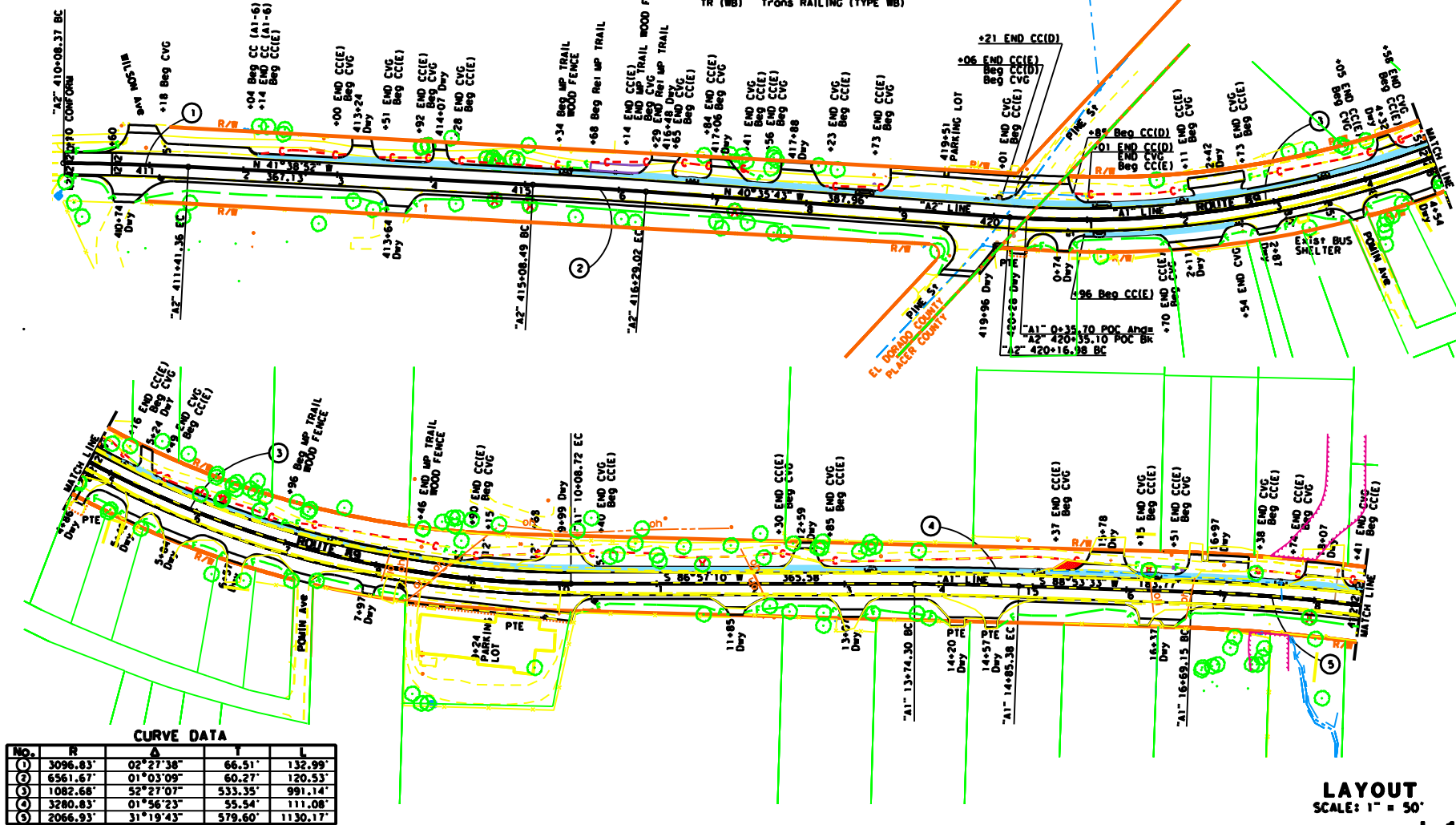
ABBREVIATIONS

- AFTS ALTERNATIVE FLARED TERMINAL SYSTEM
- CEP COUNTY ENCROACHMENT PERMIT
- CVC CONC VALLEY GUTTER
- CCI CONC CURB (TYPE I)
- CCIE CONC CURB (TYPE E, Mod)
- DE DRAINAGE EASEMENT
- DEA (SFT) END ANCHOR ASSEMBLY (TYPE SFT)
- MP TRAIL MULTI-PURPOSE TRAIL
- PTE PERMIT TO ENTER
- TCE TEMP CONSTRUCTION EASEMENT
- TR (WB) TRANS RAILING (TYPE WB)

Dist:	COUNTY	ROUTE	POST MILE	SHEET	TOTAL
03	ED, Plg	89	21.27274	15	15
			TOTAL PROJECT		
			0.0/18.5		

Mary H. Dunbar
 REGISTERED CIVIL ENGINEER 2-28-11 DATE
 32899
 22-31-17
 CIVIL
 STATE OF CALIFORNIA

PLANS APPROVAL DATE
 THE STATE OF CALIFORNIA OR ITS OFFICERS OR AGENTS SHALL NOT BE RESPONSIBLE FOR THE ACCURACY OR COMPLETENESS OF SCANNED COPIES OF THIS PLAN SHEET.



CURVE DATA

NO.	R	Δ	T	L
01	3096.83'	02°27'38"	66.51'	132.99'
02	6561.67'	01°03'09"	60.27'	120.53'
03	1082.68'	52°27'07"	533.35'	991.14'
04	3280.83'	01°56'23"	55.54'	111.08'
05	2066.93'	31°19'43"	579.60'	1130.17'

LAYOUT
 SCALE: 1" = 50'
 L-1

